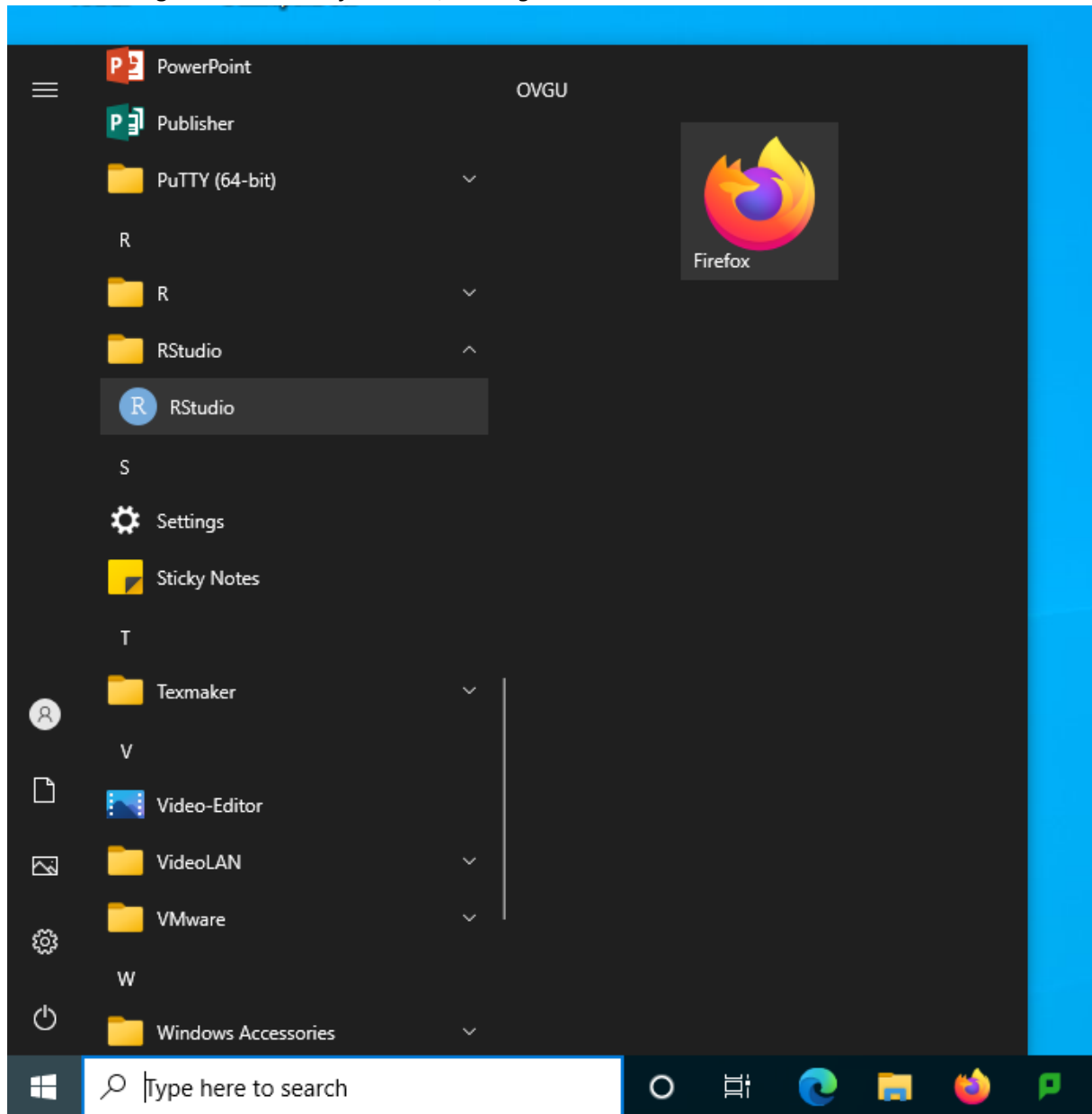
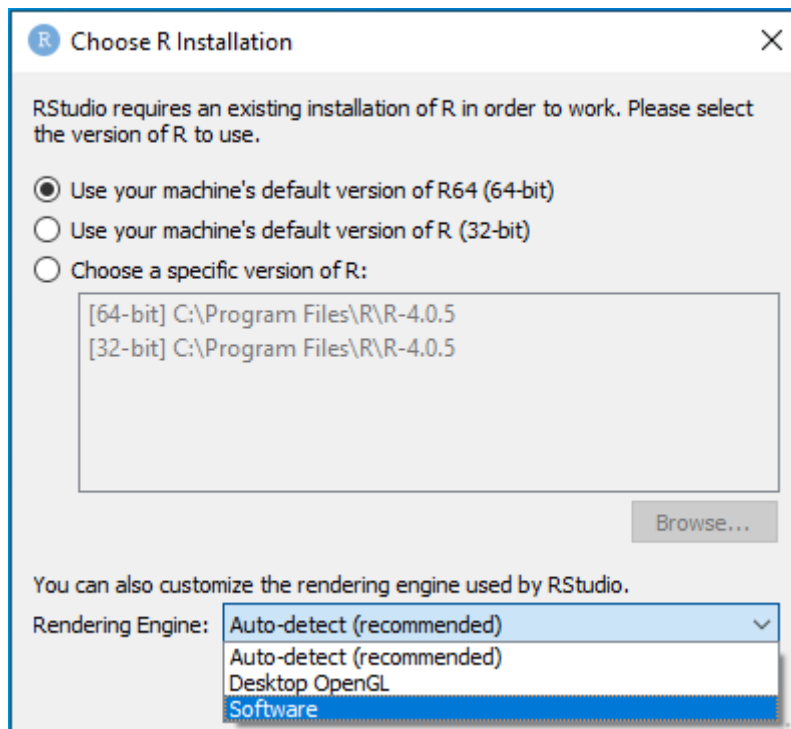


Quick guide for opening the statistics software R

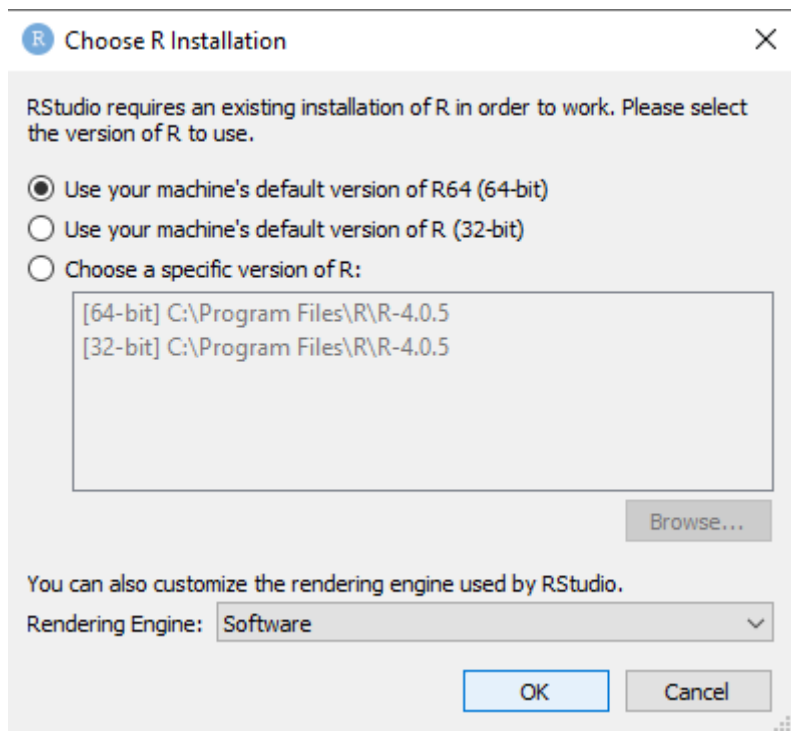
Before starting RStudio for the *first time*, the *engine* must be set.



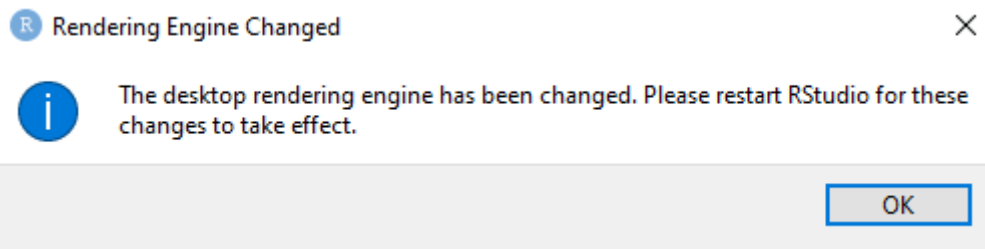
Open the RStudio options dialog by pressing “Ctrl” + Click on “RStudio”



Choose Rendering Engine: „Software“.



Confirm by clicking “OK”.



Quit the preceding dialog by pressing the OK-Button. Now, you can work with RStudio.